

WHICH EGGPLANT WILL YOU CHOOSE?

CONVENTIONAL

Pesticide applied as much as
1-2 hrs/day, 4 days/week

A total of 42 hrs per production period
at a rate of 65 liters/ha



Increased exposure to pesticides

A broad spectrum of insecticides

Consisted of 25 commercial brands:

- 2 category I (highly toxic)
- 9 category II (moderately toxic)
- 7 category III (slightly toxic)
- 7 category IV (non-toxic)

Reported effects on health:

- Dermal irritation
- Respiratory problems
- Dizziness, nausea, vomiting
- Altered cardiovascular function
- Reduced muscular strength
- Occupational skin cancer
- Increased risk of non-Hodgkin lymphoma
- Atrophy and paralysis of exposed body parts

Insecticide residue detected

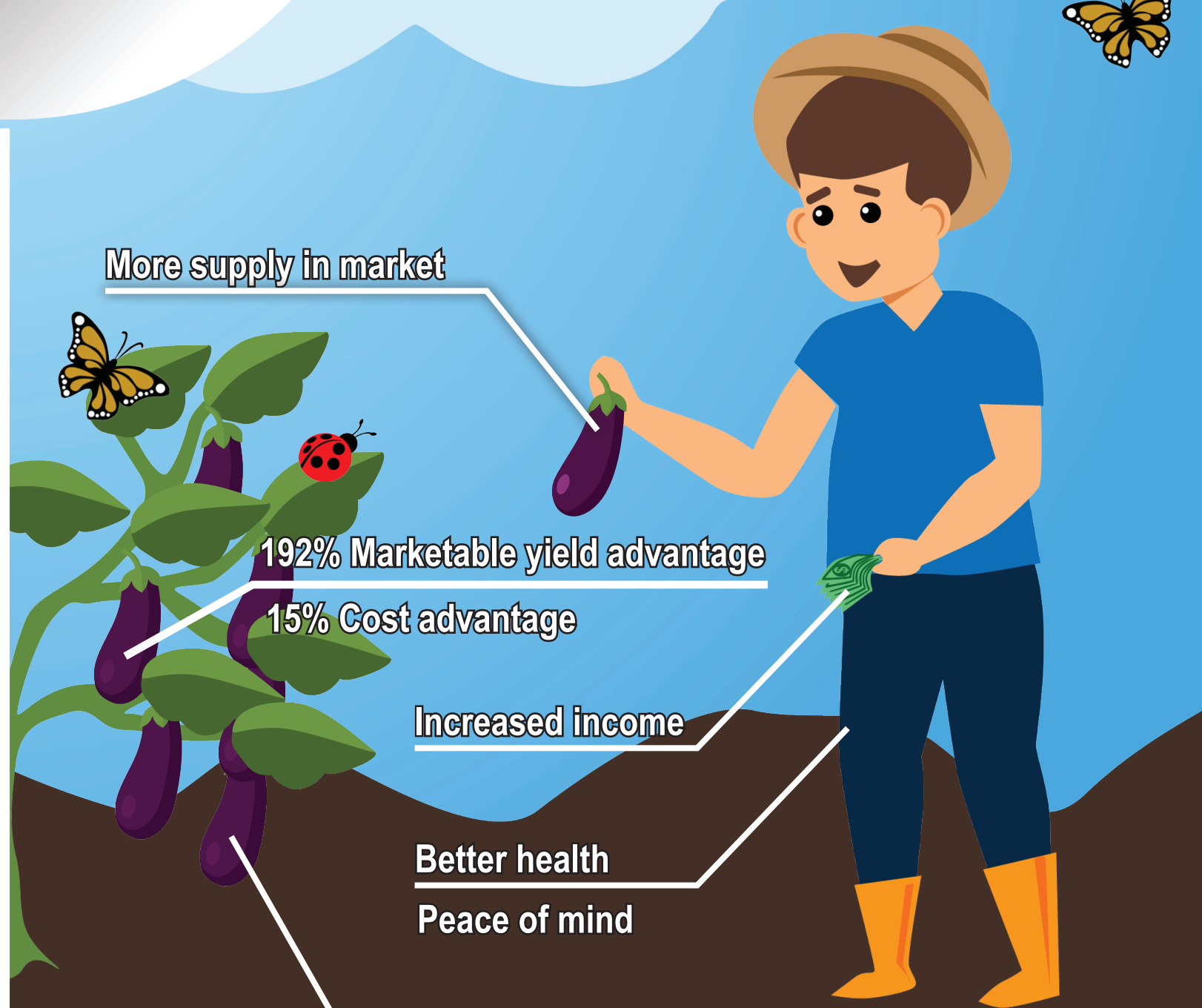
Fruit and shoot borer (FSB)
causes 20-92%
yield loss

Internal feeders, pesticide
application is often futile

INSECT RESISTANT (Bt)

No pesticides needed

Beneficial insects not affected



More supply in market

192% Marketable yield advantage

15% Cost advantage

Increased income

Better health

Peace of mind

Not prone to FSB infestation

No soil contamination

